

# SWING GATE OPENER

PW150/200

 **POWERTECH**



## Compact & Streamline Design For Light Gates

- Suited for light swing gates with leaves up to 2.5m and 250kg
- Easy and quick installation due to compact size, silent operation
- Motor located on the top for easy maintenance
- 2 options for front attachment : metal or plastic

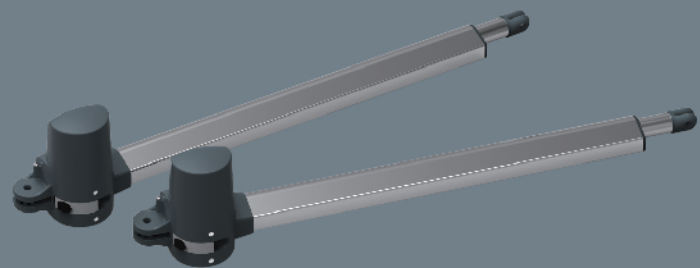
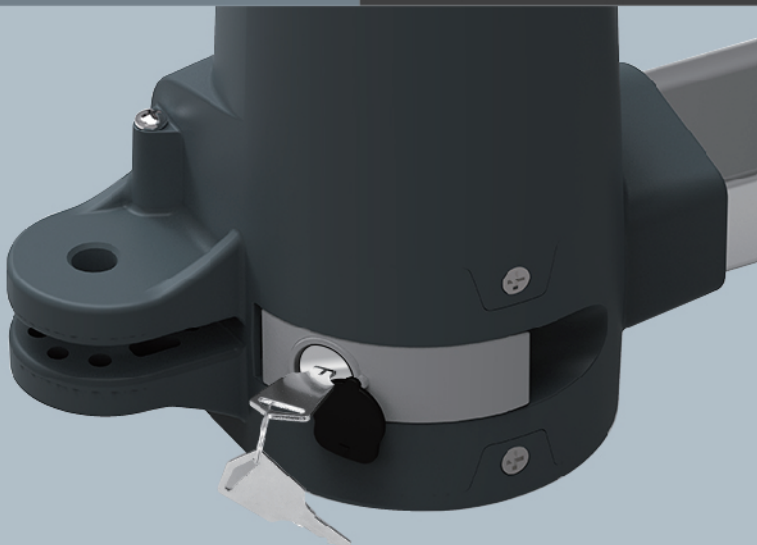
## Practical & Easy to Operate

- Two options available for auto-closing : time limit or photocell trigger
- Easy to operate release handle
- Back-up battery to ensure operation in case of power failure (optional)
- Large choice of programmable functions

## Smartphone Control

- Control your gates through your smartphone anytime, anywhere
- Compatible with the Eyeopen App

Motor	PW 150	PW 200
Category	Swing Gate Opener	Swing Gate Opener
Ma x gate length / Max gate weight	2M/200Kg	2.5M/250Kg
Power Supply	110-240Vac (50-60Hz)	110-240Vac (50-60Hz)
Motor Power Supply	24Vdc	24Vdc
Gear type	Worm gear	Worm gear
Duty cycle	50%	50%
IP Rating	IP44	IP44
Working / Operating temperature	-20~50°C	-20~50°C
Current (A)	4.2A	4.2A
Power (W)	100W	100W
Manual release	Key	Key
Dimensions	674x98x170mm	799x98x170mm



PW150/200

