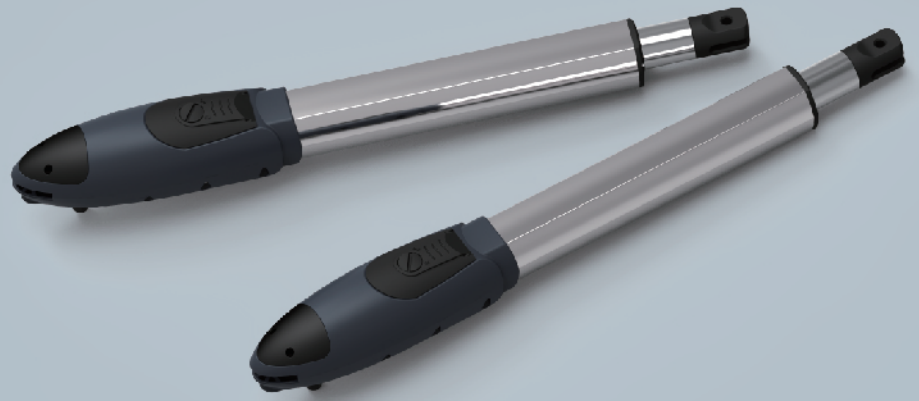


SWING GATE OPENER

PW330/320 SERIES

 **POWERTECH**



Practical & Quick Installation

- Designed for swing gates with leaves up to 4.5M and 450kg
- Suited for heavy gates application with increased durability
- Easy installation with a wide range of angle

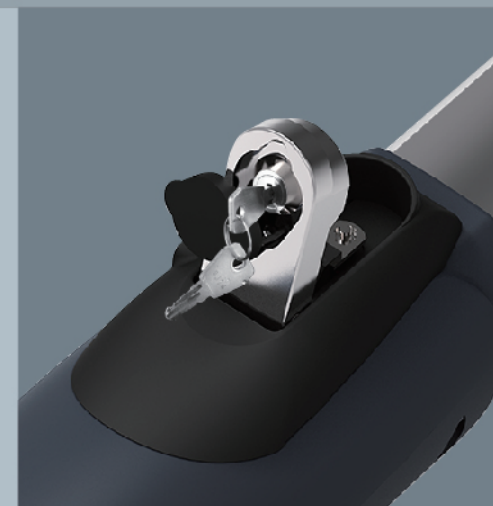
Safe & Easy To Operate

- Easy access to manual release handle from above
- Deceleration on opening and closing for more safety
- Back-up battery in case of power failure (optional)
- Large choice of programmable functions

Smartphone Control

- Control your gates through your smartphone anytime, anywhere
- Compatible with the Eyeopen App

PW330/320 SERIES



Motor	PW 220/220K	PW 320/320K	PW 230/230K	PW 330/330K	PW 330L
Category	Swing Gate Opener	Swing Gate Opener	Swing Gate Opener	Swing Gate Opener	Swing Gate Opener
Max gate length / Max gate weight	2.5M/200Kg	3M/300Kg	3M/250Kg	3.5M/350Kg	4.5M/450Kg
Power Supply	110-240Vac (50-60Hz)	110-240Vac (50-60Hz)	110-240Vac (50-60Hz)	110-240Vac (50-60Hz)	110-240Vac (50-60Hz)
Motor Power Supply	24Vdc	24Vdc	24Vdc	24Vdc	24Vdc
Gear type	Worm gear	Worm gear	Worm gear	Worm gear	Worm gear
Duty cycle	50%	50%	50%	50%	50%
IP Rating	IP44	IP44	IP44	IP44	IP44
Working / Operating temperature	-20~50°C	-20~50°C	-20~50°C	-20~50°C	-20~50°C
Current (A)	4A	6A	4.2A	6A	6A
Power (W)	100W	144W	100W	144W	144W
Manual release	Tool or Key	Tool or Key	Tool or Key	Tool or Key	Tool or Key
Dimensions	844x115x106mm	844x115x106mm	844x115x106mm	844x115x106mm	1059x123x124mm