

PG200 SERIES

GARAGE DOOR OPENER



 **POWERTECH**



PG200 SERIES

Designed for garage doors automation up to 25m²

Reliable Functions

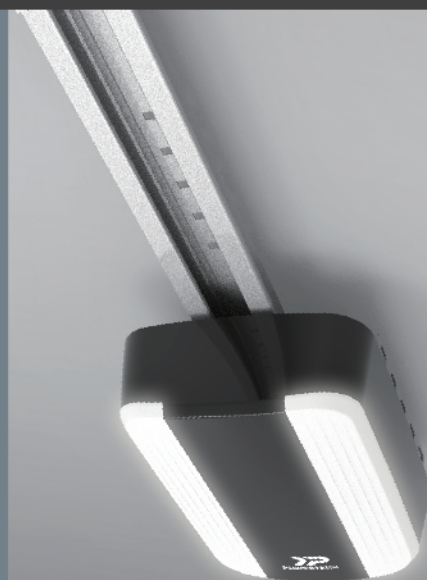
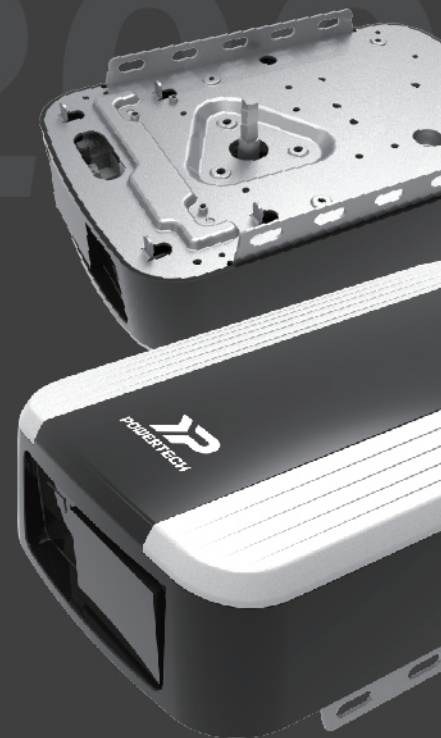
Metal base plate offers stability while installing the ceiling brackets

Adjustable 16 parameters for different installation scenarios

Compatible with back-up battery in case of power outage

Built in BT/Wifi module allows you to control your device.

Working with multiple remotes and operation device



Motor	PG200-800N	PG200-1000N	PG200-1200N	PG200-1500N
Category	DC Garage Door Motor	DC Garage Door Motor	DC Garage Door Motor	DC Garage Door Motor
Max gate length / Max gate weight	10-12m ²	12-14m ²	14-16m ²	≤25m ²
Power Supply	AC 220 / 110V ; 50Hz~60Hz	AC 220 / 110V ; 50Hz~60Hz	AC 220 / 110V ; 50Hz~60Hz	AC 220 / 110V ; 50Hz~60Hz
Motor Power Supply	DC24V	DC24V	DC24V	DC30V
Gear type	Worm gear	Worm gear	Worm gear	Worm gear
Force	800N	1000N	1200N	1500N
IP Rating	-	-	-	-
Working / Operating temperature	-20° ~50° C	-20° ~50° C	-20° ~50° C	-20° ~50° C
Current (A)	3.33A	4.2A	5A	7A
Power (W)	80W	100 W	120 W	210W
Manual release	Yes	Yes	Yes	Yes
Dimensions	350mmx228mm x91mm	350mmx228mm x91mm	350mmx228mm x91mm	350mmx228mm x91mm