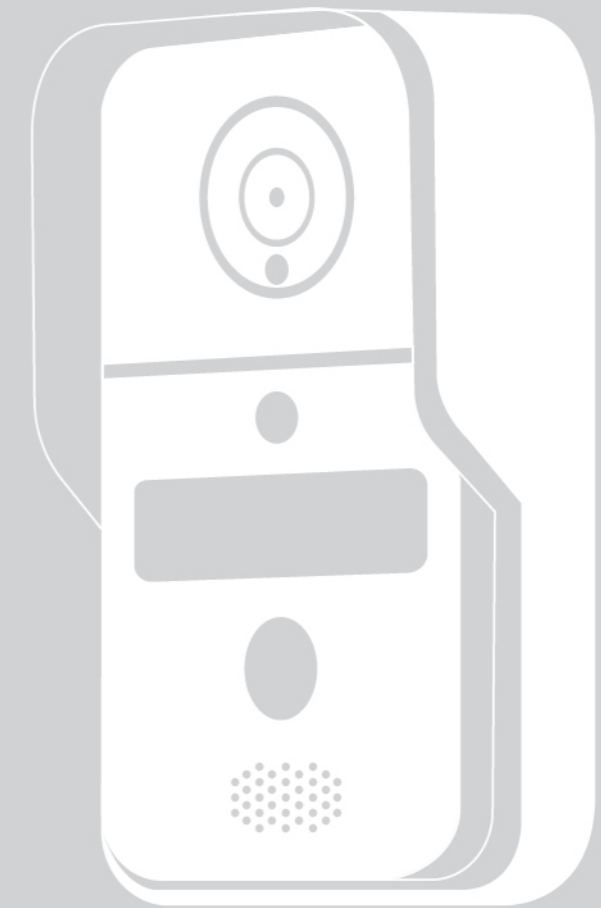


# Biiibell



User manual for video doorbell

# INDEX

## A. INTRODUCTION OF Biibell

3

## B. PRODUCT OVERVIEW

3

B1. PRODUCT OVERVIEW

3

B2. KIT CONTENTS

4

B3. SPECIFICATIONS

5

## C. INSTALLATION GUIDE

6

C1. HARDWARE INSTALLATION - CONNECT TO WI-FI

6

C2. HARDWARE INSTALLATION - CONNECT TO LAN CABLE

7

C3. PAIRING INDOOR CHIME WITH Biibell

8

## D. Eyeopen SETUP GUIDE

9

D1. APPLY FOR A NEW ACCOUNT

9

D2. CONNECT Biibell TO Eyeopen

10-12

D3. OWNER SHARES THE Biibell TO OTHER USERS

13

## E. CONNECT Biibell to ELECTRIC LATCH

14

E1. TERMINALS OF THE Biibell

14

## F. ADD AND DELETE RFID CARDS TO Biibell

15

## G. CONNECT YOUR Biibell WITH A GATE OPENER

16

## H. FAQ

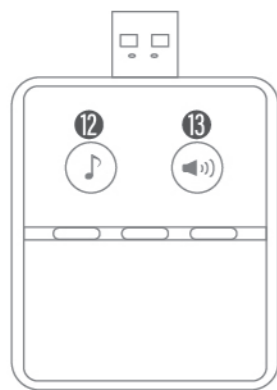
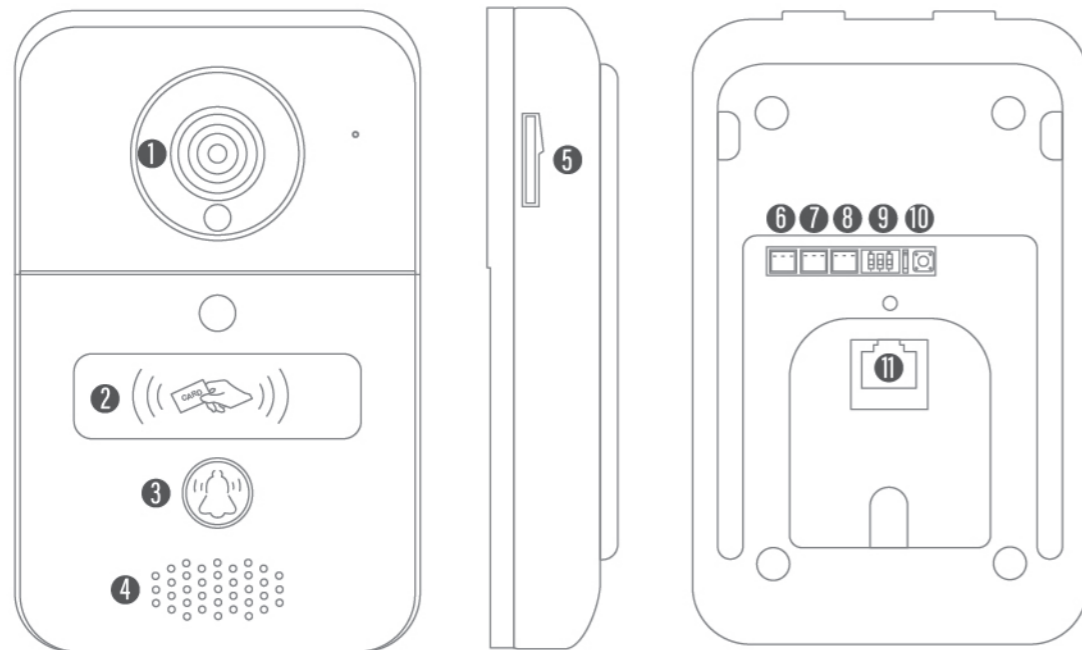
17

## A. INTRODUCTION OF Biibell

This user manual is designed to provide indications of the Biibell and its features and functions. Biibell is a device which can connect to Eyeopen and provide two-way audio communication. Biibell can be integrated with other Wi-Fi gate openers on the Eyeopen App.

## B. PRODUCT OVERVIEW

### B1.PRODUCT OVERVIEW



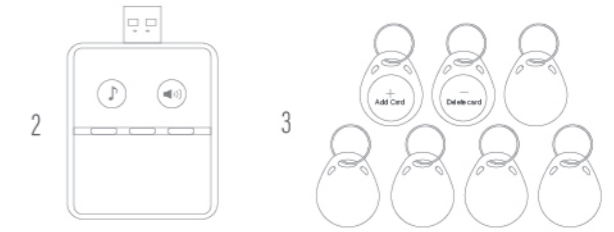
- |                           |                     |
|---------------------------|---------------------|
| 1 Lens                    | 8 EXIT              |
| 2 RFID scan area          | 9 Unlock delay time |
| 3 Call button             | 10 Reset button     |
| 4 Speaker                 | 11 RJ45 port        |
| 5 Micro SD card slot      | 12 Ring tone        |
| 6 Power AC8-24V DC 12-36V | 13 Volume           |
| 7 NC/COM/NO               |                     |

## B2.KIT CONTENTS

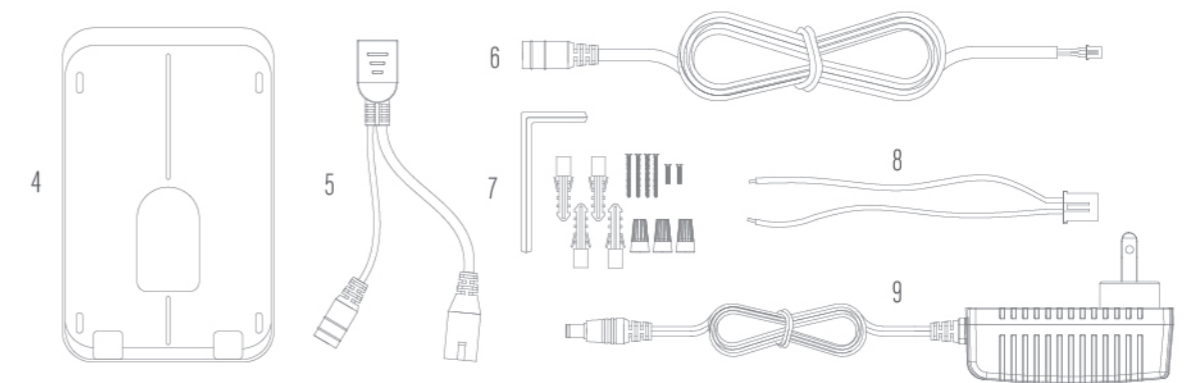
### ► Biibell ◀



### ► ACCESSORIES ◀



### ► HARDWARE ◀



REF.	DESIGNATION	AMOUNT
1	Biibell	1
2	Indoor chime	1
3	RFID cards	7
4	Wall mount bracket	1
5	POE cable	1
6	DC cable	1
7	Parts package	1
8	Power wire	1
9	12V Power	1

Biibell

## B3. SPECIFICATIONS

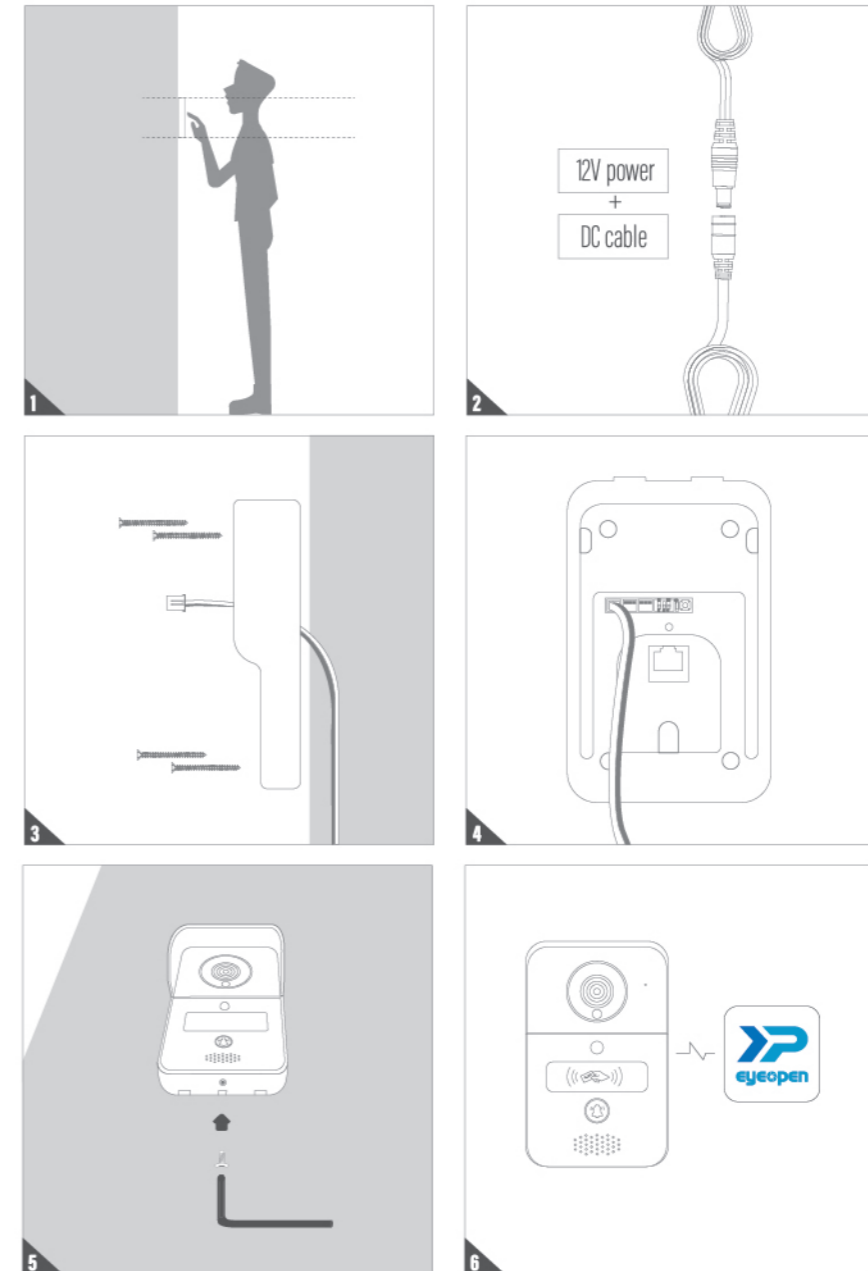
Video resolution	Full HD 1080P	Ethernet	10/100Mbps
Field of view	150 Degree	Infrared light	Full HD 1080P
Compression	H.264	Micro SD card	MicroSD card up to 128GB
Frame rate	25fps	Power	DC 12V~36V; AC 8V~24V; PoE
Day/Night Mode	ICR with IR LED	Tamper Alarm	Support
Audio	2 Way Audio	PIR Detection	110 Degree
Connectivity	802.11b/g/n@2.4G	Operating Temperature	-20°C ~55°C

## C. INSTALLATION GUIDE

### C1. HARDWARE INSTALLATION - CONNECT TO WI-FI

#### ● HARDWARE INSTALLATION

1. Choose a proper location for the Biibell, be sure to consider the average height of visitors.
2. Connect the 12V power plug to the DC cable.
3. Align the DC cable and wall mount bracket with the hole on wall; fasten the wall mount bracket.
4. Connect the DC cable to the Biibell 12V terminal
5. Fasten the BiibELL on the wall mount bracket with an allen key and a screw from parts package.
6. Refer to page 10 connect Biibell to Eyeopen App to finish the Wi-Fi connection.



Biibell

## C2. HARDWARE INSTALLATION - CONNECT TO LAN CABLE

### ● HARDWARE INSTALLATION

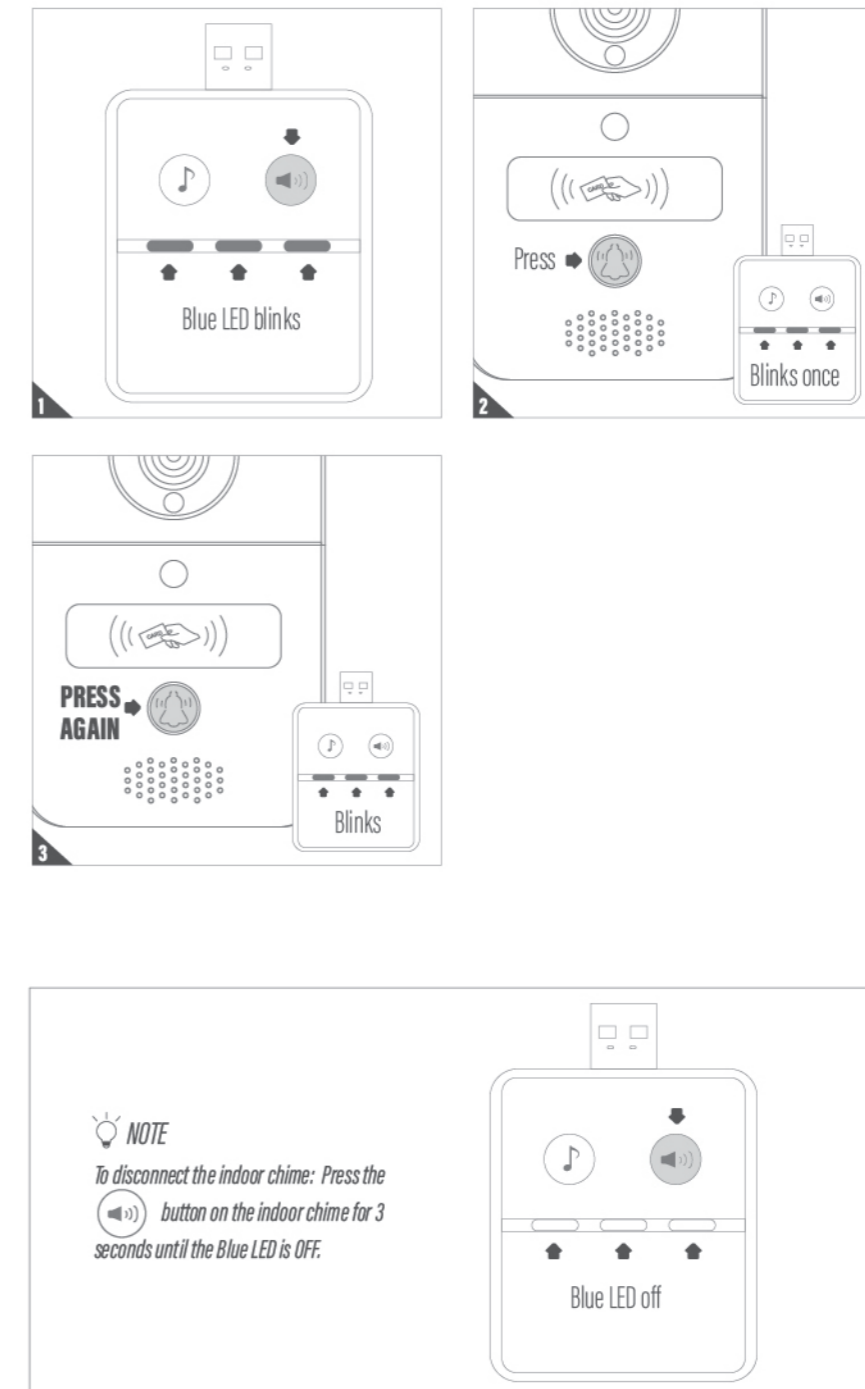
1. Choose a proper location for the Biibell, be sure to consider the average height of visitors.
2. Connect the 12V power plug to the POE wire.
3. Connect the POE wire to your router.
4. Connect a LAN cable (cable not provided) to the POE wire
5. Align the LAN cable and wall mount bracket with the hole on wall; fasten the wall mount bracket.
6. Connect the LAN cable (cable not supported) to the back of the Biibell.
7. Fasten the Biibell on the wall mount bracket with an allen key and a screw from parts package.
8. Refer to page 7 Connect Biibell to Eyeopen App to finish the Wi-Fi connection.



## C3. PAIRING INDOOR CHIME WITH Biibell

Connect the indoor chime to the power via USB port/USD adaptor. Please also ensure Biibell is powered.

1. Press and hold the button of indoor chime for 3 seconds until the blue LED blinks.
2. Press the button of Biibell, the blue LED of the indoor chime blinks once.
3. Press the button of Biibell **again**, and the indoor chime will blink which means the pairing procedure is completed.



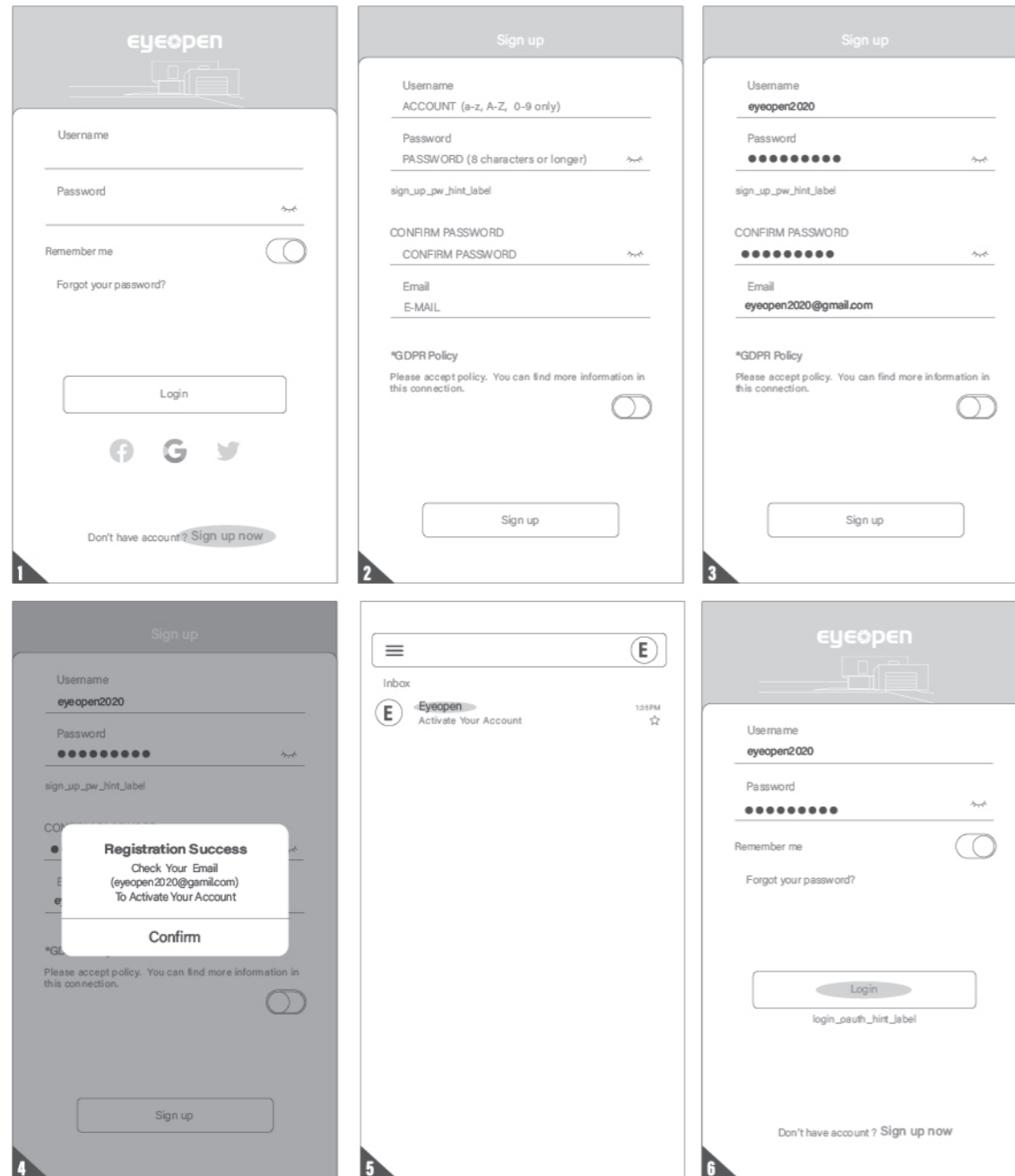
## D. Eyeopen SETUP GUIDE

### D1. APPLY FOR A NEW ACCOUNT

1. Please scan the QR code and download Eyeopen.
2. Press sign up icon and press the agree icon to continue
3. Please type the following information for registration:



- a. Password (enter twice for verification)
- b. The password should have at least 1 English character and at least 8 characters/numbers in total.



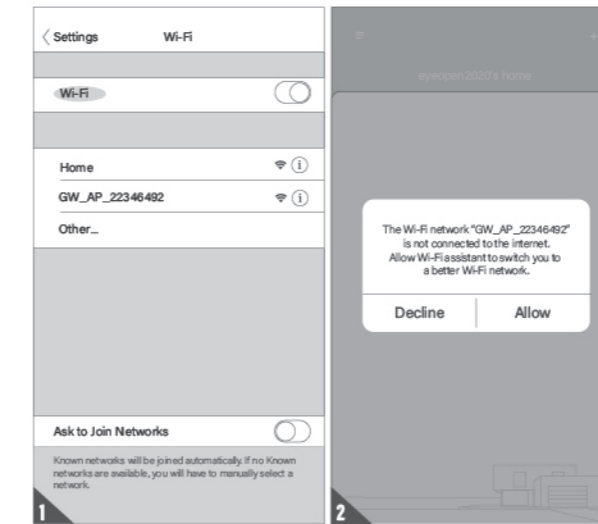
4. The system will send a link to your email when the registration succeeds
5. Please go to your email, and click the link to activate your account.
6. Please log in to your account.

### D2. CONNECT Biibell TO Eyeopen

- CONNECT TO Biibell's AP (1st USER-OWNER)

⚠ Make sure the Biibell is perfectly installed and powered.

1. Please connect 2.4GHz Wi-Fi or mobile data to login to the Eyeopen first
2. Switch to your smartphone's Wi-Fi setting page to connect to "GW\_\_AP\_\_XXXXXXX" (XXXXXXX is the UID of the device)



💡 Please refer to the FAQ if GW\_\_AP of the Biibell cannot be found

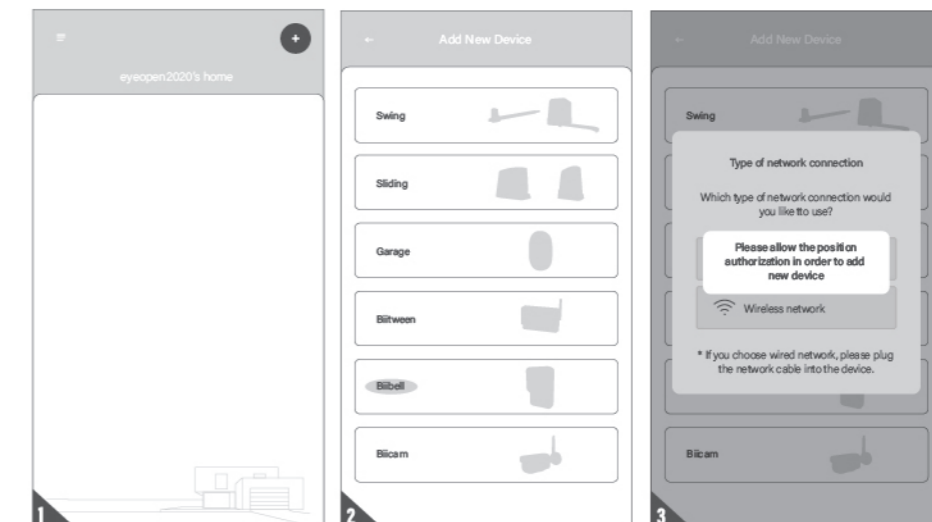
💡 Please wait for 20 seconds after connecting the GW\_\_AP device internet

💡 Please press the **decline** button when the connection hint shows up

- ADD NEW Biibell

1. Tap (+) icon to add a new device
2. Tap the Biibell icon
3. If the system shows "Please allow the position authorization in order to add new device"

⚠ Go to the setting page and set Location to "While using the App"



Biibell

## ● INDICATIONS OF CONNECTION

1. When you connect to GW\_\_AP and add Biibell, the system shows "Please connect to Wi-Fi"

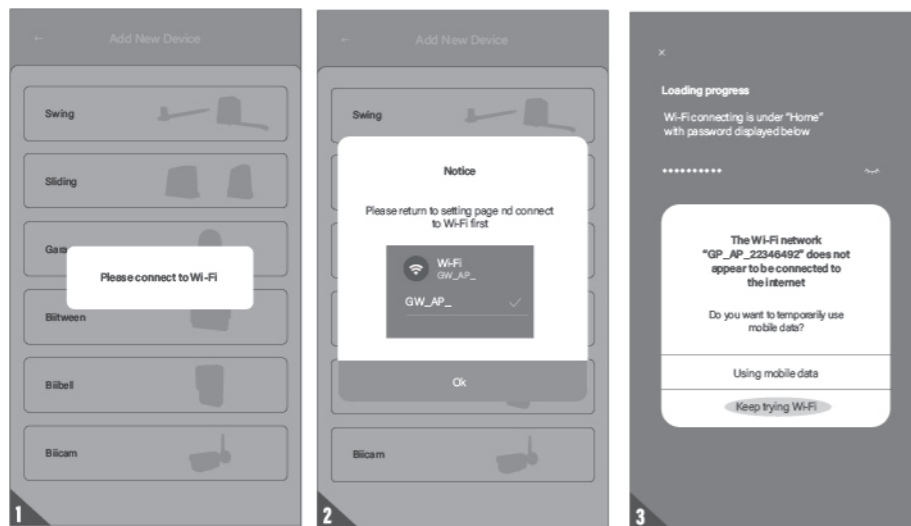
*Please connect 2.4GHz Wi-Fi or mobile data to login to Eyeopen before connect to GW\_\_AP*

2. When you connect to GW\_\_AP and add Biibell, but the system shows "Please return to setting page and connect to Wi-Fi first"

*The system takes time to connect to Biibell's AP. Please wait till your smart phone shows the Wi-Fi icon on the top of your smartphone. It takes about 20-30 seconds*

3. When the Biibell is connecting, but the system shows "The Biibell's Wi-Fi is not connected to the internet"

*A BiibELL's AP is closed network which is only for connecting to your home Wi-Fi system. Please tap the "Keep trying Wi-fi to finish connection."*



## ● SET PIN CODE AND CONNECT TO YOUR HOME Wi-Fi

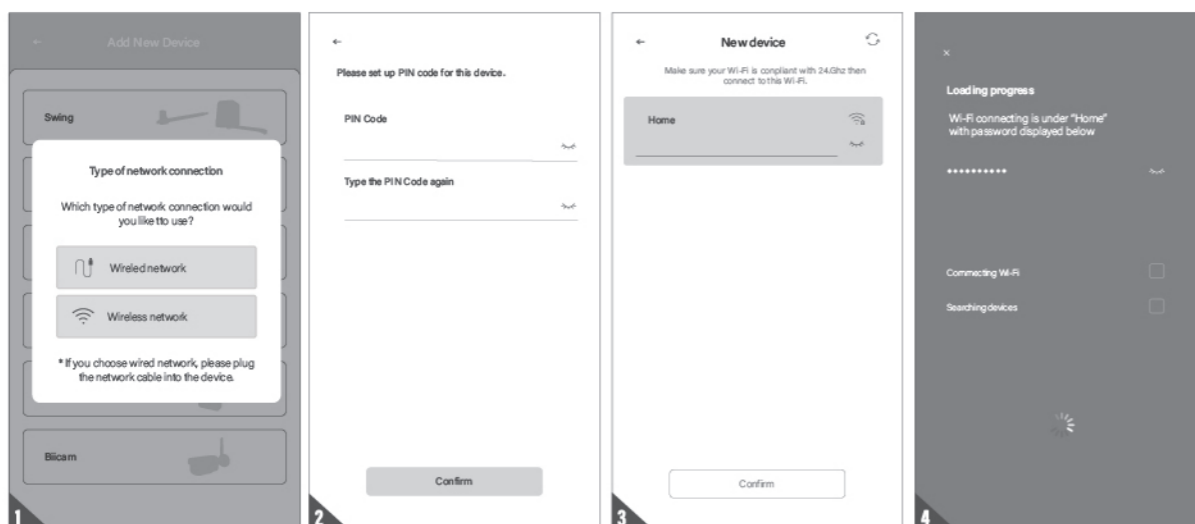
1. Tap wired network / wireless network based on the installation from page 4 and 5

2. Set the PIN code twice and confirm

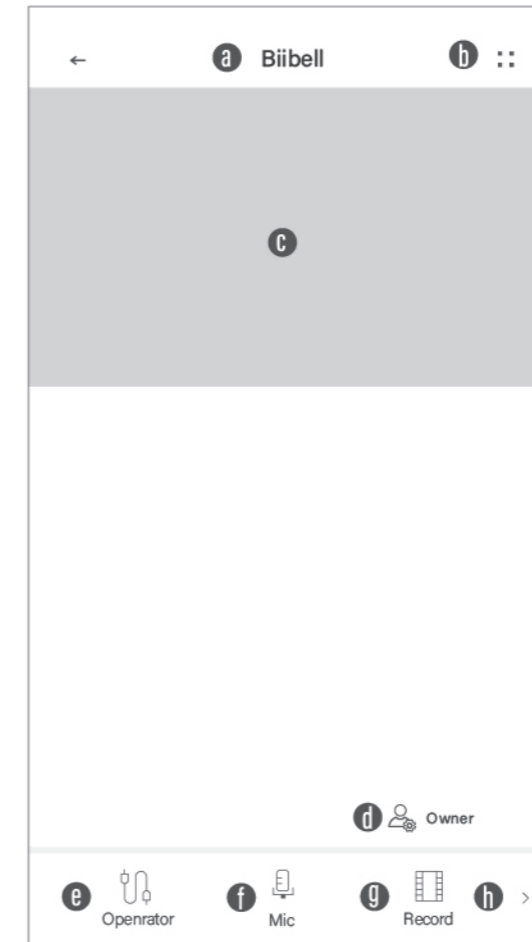
*Please refer to the FAQ\_Question1 if you forgot the password*

3. Select your home Wi-Fi (2.4GHz) and enter the **CORRECT** password. Tap confirm to start connecting.

4. The system starts to countdown. After countdown, the Biibell icon will show on the main interface



## ● OPERATION INTERFACE OF Biibell



- a Device name
- b Setting page
- c Real-time view
- d Owner/Manager/User
- e Key for electronic lock
- f Speaking button
- g Recording (Need micro SD card)
- h Motion detection

Biibell

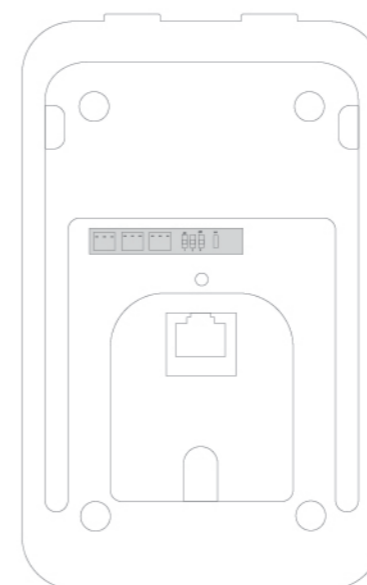
### D3. OWNER SHARES THE Biibell TO OTHER USERS

1. Please go to the operation page and tap the setting page icon (⋮)
2. Tap (Device sharing)
3. Tap (Create new group) icon
4. Name your group and determine a time period
5. Add user by entering Eyeopen accounts
6. The group icon will show at the (Device sharing) page

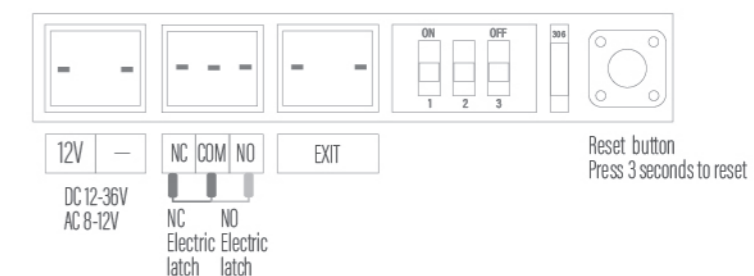


### E. CONNECT Biibell to ELECTRIC LATCH

#### E1. TERMINALS OF THE Biibell



#### ● FUNCTION OF EACH TERMINAL

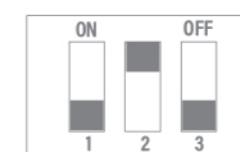


#### ● DELAY TIME FOR ELECTRIC LATCH

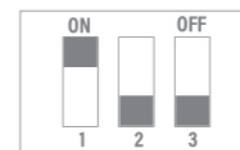
##### Delay 1S



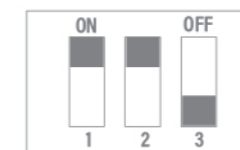
##### Delay 4S



##### Delay 8S

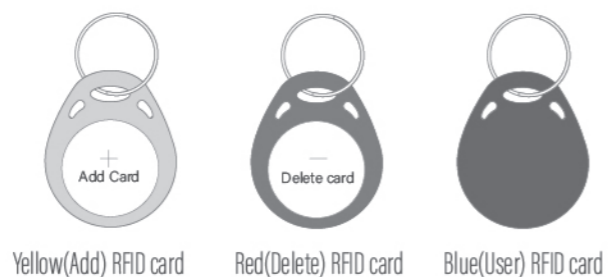
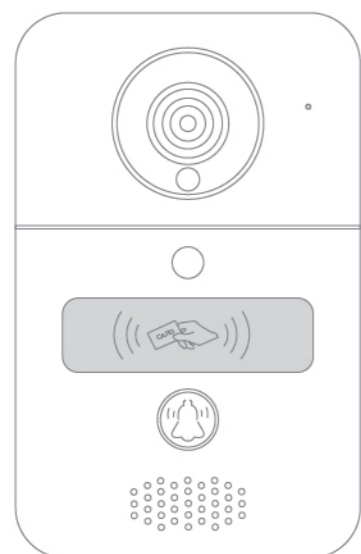


##### Delay 16S





## F. ADD AND DELETE RFID CARDS TO Biibell



Yellow(Add) RFID card    Red(Delete) RFID card    Blue(User) RFID card

### ● ADD RFID CARDS

1. Please scan the **YELLOW (Add) RFID card**.

The scan area shows **BLUE light ON** with a beep which activates the system for adding the **BLUE (User) RFID card**.

2. Scan a **BLUE (User) RFID card** and the **BLUE LED shows ON** with a beep which indicates adding user card successfully.

3. Scan the **YELLOW (Add) RFID card AGAIN** and the **BLUE light goes OFF** which deactivates the pairing mode.

*⚠ After scanning the yellow (Add) RFID card, the system shows red light with 3 beeps which indicates activation fail. Please scan the yellow RFID card again.*

### ● DELETE RFID CARDS

1. Please scan the **RED(Delete) RFID card**.

The scan area shows **RED light ON** with a beep which activates the system for deleting the **BLUE (User) RFID card**.

2. Scan a **PAIRED BLUE (User) RFID card** and the **RED LED shows ON** with a beep which indicates deleting user card successfully.

3. Scan the **RED (Delete) RFID card AGAIN** and the **RED light goes OFF** which deactivates the delete mode.

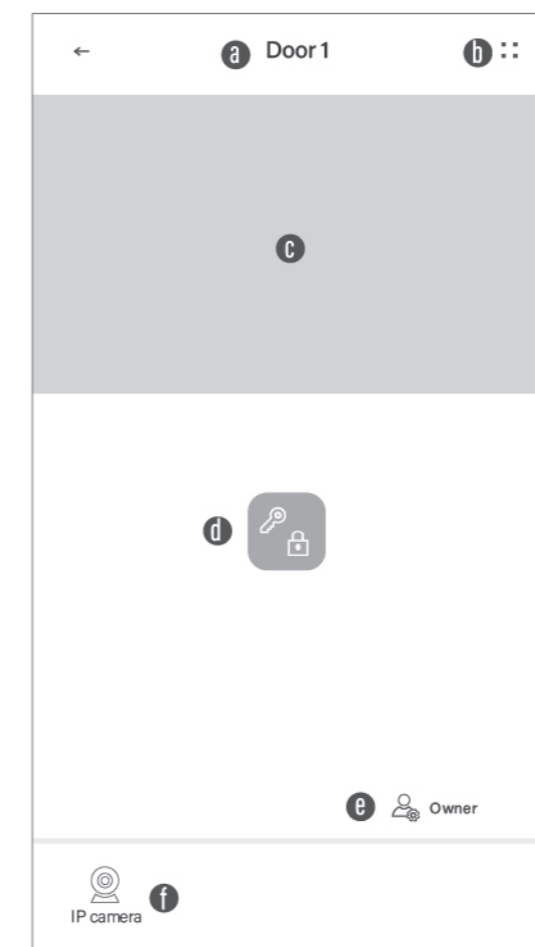
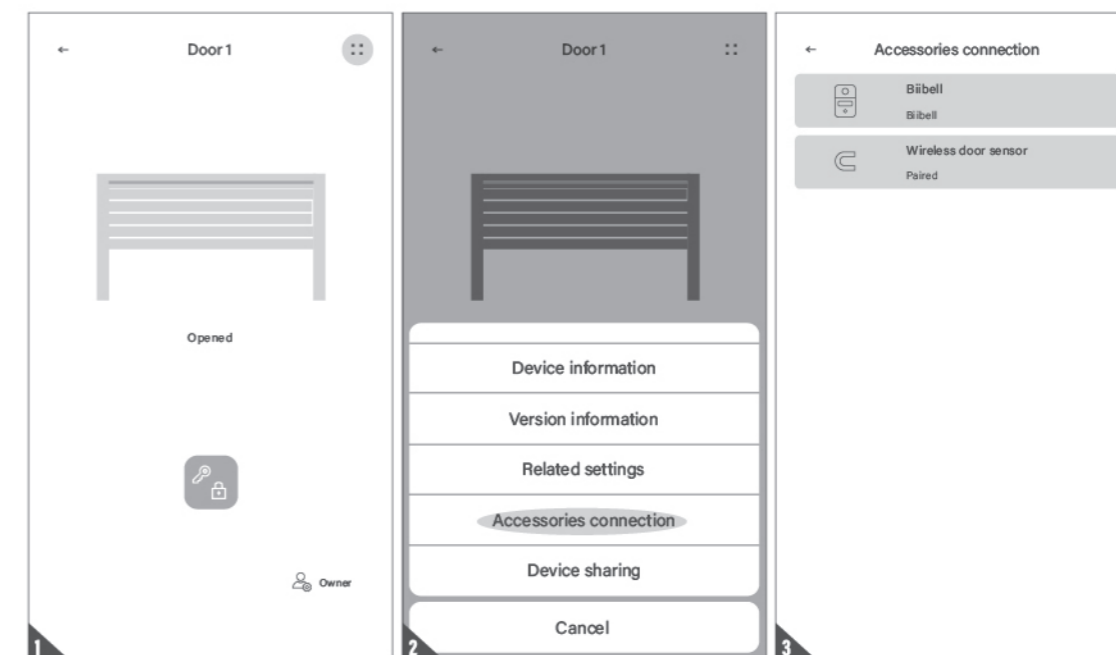
*⚠ After scanning the red (Delete) RFID card, the system shows red light with 3 beeps which indicates activation fail. Please scan the red (Delete) RFID card again.*

## G. CONNECT YOUR Biibell WITH A GATE OPENER

1. Please go to the operation page and tap the setting page icon (::)

2. Tap (Accessories connection)

3. The accessories that are already paired with Eyeopen automatically show on Accessories connection page.



- a** Device name
- b** Setting page
- c** Real-time view
- d** Operation Key
- e** Owner/Manager/User
- f** Key for electronic lock

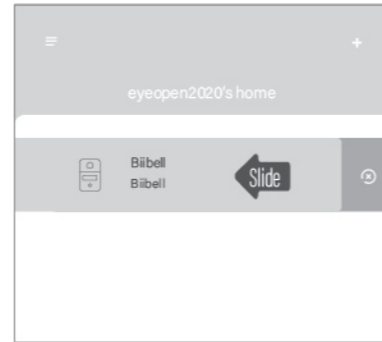
## H. FAQ

### Question 1

How to reset Biibell to default setting?

### Answer 1

1. Delete the Biibell on the Eyeopen App by sliding the Biibell icon and press the delete icon.
2. Press the Biibell reset button for 3 seconds to reset Biibell to default setting.
3. Please refer to page 10 connect Biibell to Eyeopen to reconnect the device.



### Question 2

GW\_\_AP of the Biibell cannot be found.

### Answer 2

1. Make sure the Wi-Fi setting on the smartphone has been turned on.
2. Make sure the Biibell has been set to default setting.
3. If Biibell is connected to the LAN wire, the AP mode will be turned **OFF** automatically.

### Question 3

Change Biibell's Wi-Fi network.

### Answer 3

Enter Biibell operation page ➔ Device information ➔ Wi-Fi setting  
Choose available Wi-Fi SSID ➔ Entering **CORRECT** Wi-Fi password ➔ Set

### Question 4

Unable to receive notification from Biibell.

### Answer 4

Go to the setting page of the Eyeopen App ➔ Turn ON the switch of the notification.  
Go to the setting page of your smart phone ➔ Turn ON the switch of the notification.

Biibell